



*Daylight & motion sensors
for lighting control*



*Waste Recycling Facilities
for waste and pollution control*



*Grey Water Recycling System
for irrigation water supply*

***Taikoo Place (Cambridge House, Devon House, Lincoln House, One Island East,
Dorset House, PCCW Tower, & Oxford House)***

Developer: Swire Properties Limited
Architect: Wong & Ouyang

Green Roof



*Over 70% of Timber Adopted
from sustainable source*

Energy Saving Lighting System

South Island Place

*Developer: Harston Limited
Architect: AGC Design Limited*



Solar Heat Water Panels



*Greenery
reduce the heat island effect*



*Vertical Shading
reduce glare & heat*

Rainwater Recycling Systems

Hong Kong Children Hospital

*Developer: Architectural Services Department
Architect: Simon Kwan and Associates*



Mei Ho House

Developer: Youth Hostels Association

Architect: AD+RQ Architecture Design & Research Group Limited



*Automatic demand controls
for chilled water & supply air*

Green Roof

Rainwater Recycling Systems

Sha Tin Yuen Chau Kok Complex

Developer: Architectural Services Department

Naturally Ventilated and Daylighted Void Spaces



Sha Tin Yuen Chau Kok Complex



Use of Precast System



Sky Garden



*Natural Daylights
for energy efficiency*

Anti-epidemic Features

Hong Kong Community College Hung Hom Bay Campus for the Hong Kong Polytechnic University

*Developer: The Hong Kong Polytechnic University
Architect: AD+RQ Architecture Design & Research Group Limited*



*Vertical Sunshades
reduce glare & heat*



Photovoltaic panels



*Anidolic Light Pipes
transmit sunlight to interior*



The Trade and Industry Tower in Kai Tak

*Developer: Government Property Agency
Architect: Wong Tung & Partners Limited*



Skylight
natural lights throughout the day

Curtain Wall
reduce heat and increase natural lighting

Macau Science Center (Macao, China)

Developer: Macao Foundation
Architect: Pei Partnership Architects



*Wind Turbines
generate energy*

*Double-Wall Facade
for regulating building temperature*

Pearl River Tower (Guangzhou, China)

*Developer: China National Tobacco Corporation
Architects: Gordon Gill; Skidmore, Owings & Merrill; Guangzhou Chengzong Design Institute*



Photovoltaic Solar Panels

Vanke Center (Shenzhen, China)

*Developer: Vanke Co.
Architect: Steven Holl Architects*



Ballard Library (Seattle, USA)

Developer: Seattle Public Library
Architect: Bohlin Cywinski Jackson



Cascading Greenery

*Demand-based Ventilation Systems
minimises energy use*



*Open-sided concept
create maximum perimeter for natural light and views*

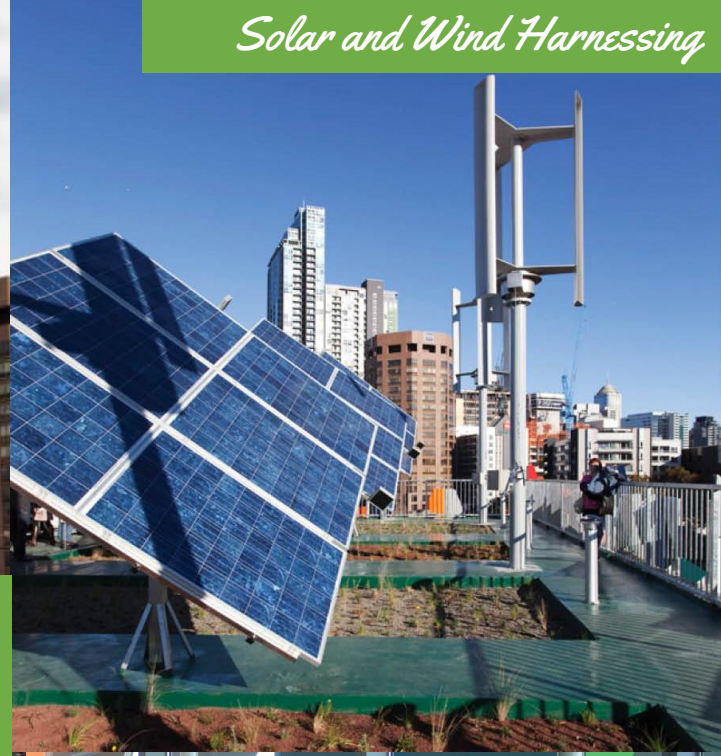


Park Royal Collection Pickering (Singapore)

*Developer: UOL Group Ltd
Architect: WOHA*



*Pixelcrete
contains half the carbon of
conventional concrete*



Solar and Wind Harnessing



Rainwater Capturing System



*Recycled Colour Panels
daylight, shade, glare control*

Pixel Building (Melbourne, Australia)

*Developer: Grocon
Architect: studio505*



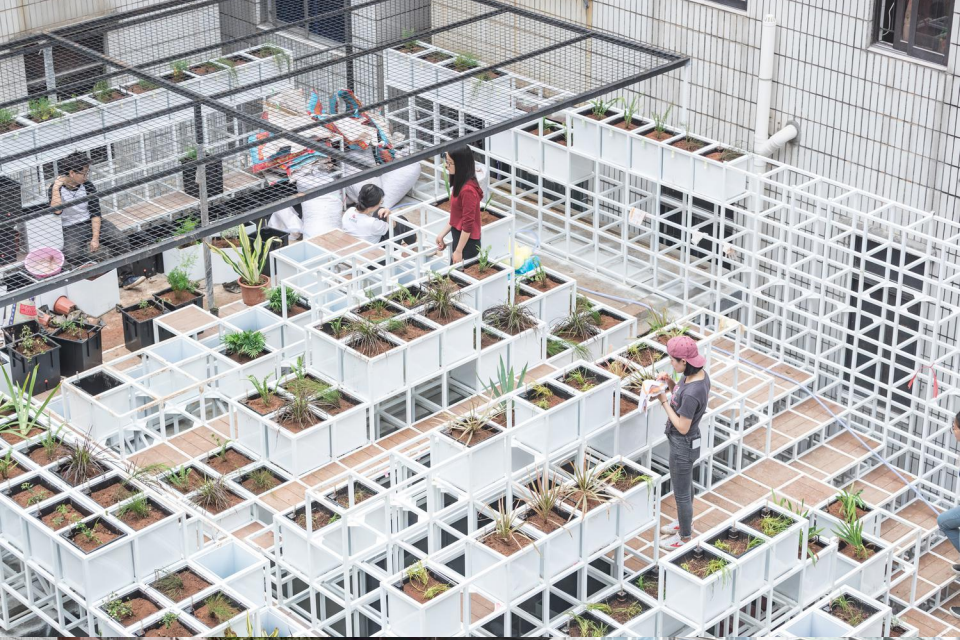
"Vertical Forest"
home to more than 100 trees,
6,00 shrubs, and 18,000 plants

Solar Panels

Prefabricated Units
on concrete frame

Rainwater Collection System

Cedar Tree Tower (Lausanne, Switzerland)
Architect: Stefano Boeri Architetti



Increase resilience to urban flooding



*Nature-based Stormwater Management System
absorbs and preserves rainwater*

Green Cloud (Shenzhen, China)

*Developer: The Nature Conservancy
Architect: ZHUBO DESIGN*

*Admin Space & Education Center for tours,
workshops, & meetings*



*Waste-to-energy plant
delivers electricity for 150,000 homes*



*10,000m² Green Roof
with ski slope & hiking trail*

CopenHill (Amager, Denmark)

*Developer: Amager Ressourcecenter
Architect: Bjarke Ingels Group*



Roof Solar Panels



*Tripled Glazed Glass
Allow in 70% of natural light*



Rainwater Recycling

The Crystal (London, United Kingdom)

Developer: Siemens

Architect: Perkins+Will, WilkinsonEyre

*Transparent Second Skin
for natural ventilation & reduced
energy costs*



*270 Wind Turbines
powers exterior lights*



Shanghai Tower (Shanghai, China)

*Developer: Shanghai Tower Construction & Development
Architect: Jun Xia (Gensler), Tong Ji Architectural Design Ltd.*



Vertical Wind Farm

*Solar Photovoltaic
and Thermal Roof*

Low Carbon Building

*Cascading Green Terraces
reduce heat island effect and collect rain water*

Semaphore (Strasbourg, France)

*Developer: Soprema
Architect: Vincent Callebaut Architectures*